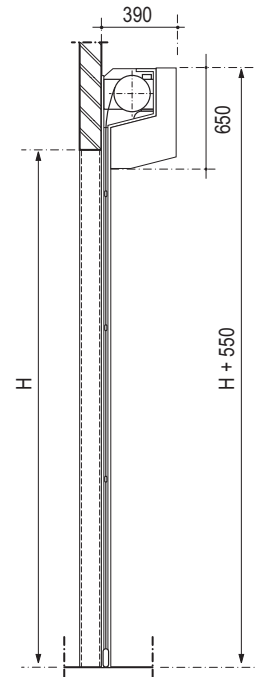
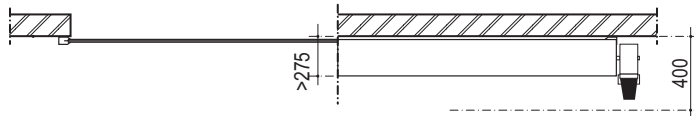


Front view



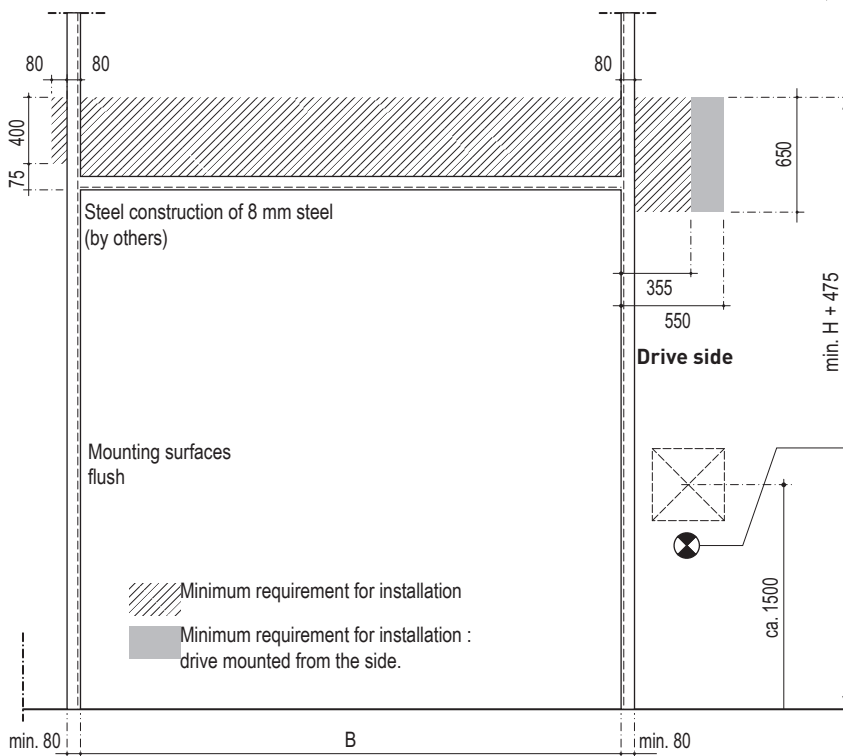
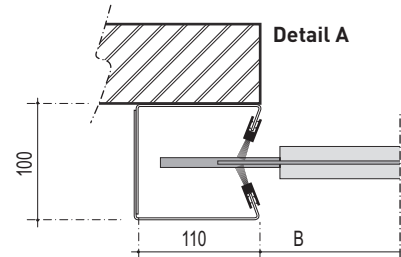
Side view



Section A

Section B

Minimum requirement for installation



Steel construction of 8 mm steel (by others)

Mounting surfaces flush

Minimum requirement for installation

Minimum requirement for installation : drive mounted from the side.

Electrical supply CEE-plug socket (by others)

Control box with contactors :
 CEE-form 3-N PE 400V/50Hz/16A

Control box with frequency inverter :
 CEE-form 1x230V/50Hz/T16A

Electrical supply by others

control box/ power supply, inside RIGHT
 control box/ power supply, inside LEFT

Installation requirements

